



Ronnie Edwards  
(770) 834-4881



Donnie Jones  
(770) 834-4881



---

## 4655 Timber Ridge Dr

4,711 SF of Space Available in Douglasville, GA



### HIGHLIGHTS

- Modern building with modern conveniences for an educational environment.
- Lots of natural lighting with ample parking and central air conditioning.

ALL AVAILABLE SPACES(3)

SPACE	SIZE	TERM	RATE	SPACE USE	CONDITION	AVAILABLE
2nd Fl, Ste 202	2,246 SF	Negotiable	\$24.05 /SF/YR	Office	Shell Space	Now
2nd Fl, Ste 203	1,211 SF	Negotiable	\$24.78 /SF/YR	Office/Medical	Shell Space	Now
2nd Fl, Ste 204	1,254 SF	Negotiable	\$23.93 /SF/YR	Office/Medical	Shell Space	Now

PROPERTY OVERVIEW

Designed and built for education, this property features classrooms, computer labs, lounge areas, private offices and storage spaces. The design is a split level building with a parking lot

- 24 Hour Access
- Signage
- Atrium

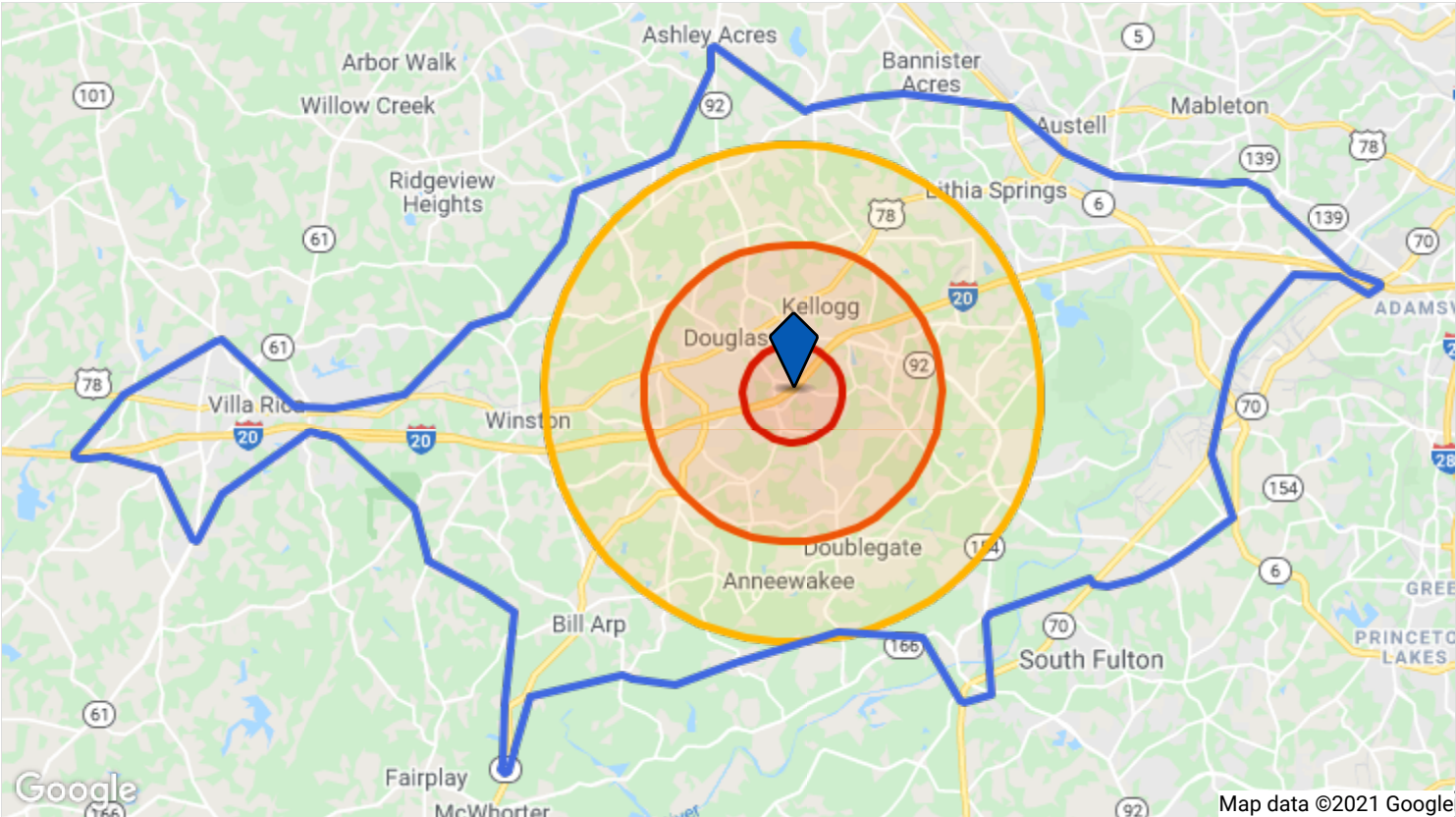
level entrance on both the first and second floors. Most classrooms and labs have multiple windows for natural lighting and ventilation.

- DDA Compliant
- Air Conditioning

PROPERTY FACTS

Building Type	Office	Building Class	B
Year Built	2007	Typical Floor Size	8,652 SF
Building Height	2 Stories	Unfinished Ceiling Height	11'
Building Size	17,303 SF		
Parking	120 Surface Parking Spaces		

COMMUTE



1 Mi.

3 Mi.

5 Mi.

15 Min Drive ^

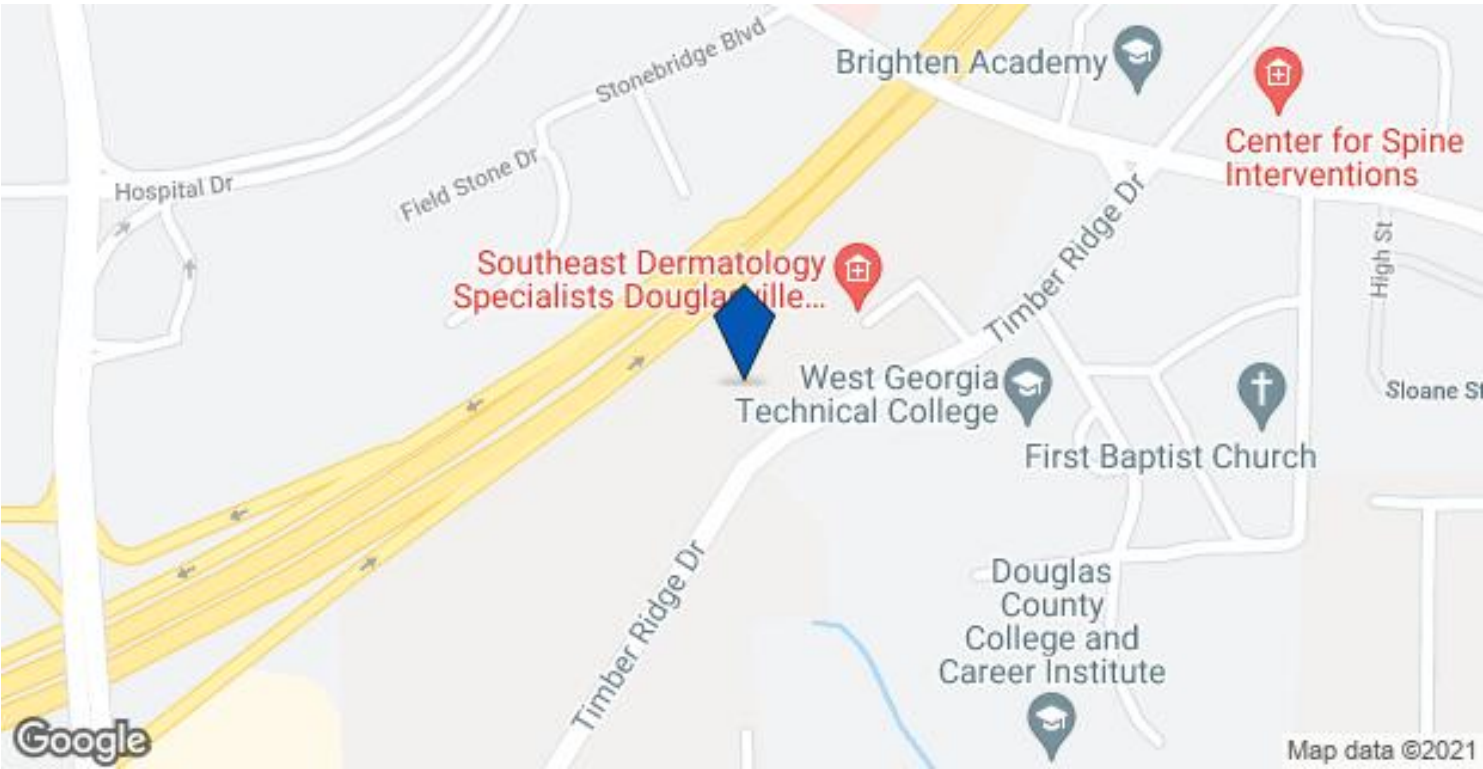
TRANSPORTATION

AIRPORT

Hartsfield-Jackson Atlanta International Airport	45 min drive	28.5 mi
--	--------------	---------



MAP OF 4655 TIMBER RIDGE DR DOUGLASVILLE, GA 30135





ADDITIONAL PHOTOS



Entrance



Office



Entrance



Break room



Elevator



Conference room





Kitchen



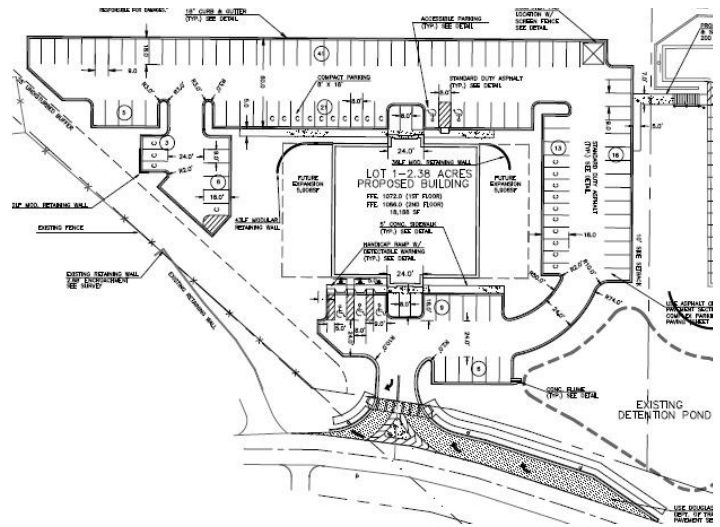
Bathroom



Listing ID: 16431261



Aerial view 2



## Site Plan

Last Updated: 7/26/2021

The LoopNet service and information provided therein, while believed to be accurate, are provided "as is". LoopNet disclaims any and all representations, warranties, or guarantees of any kind.